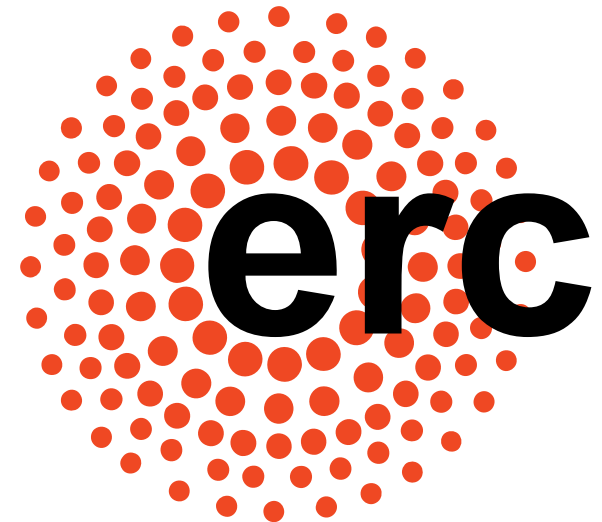


# The European Research Council



**ERC Scientific Department:  
SNE Call 2018 - Information  
Meeting for Member States**

**Tuesday 19 June 2018**



# ERCEA: SNE Call 2018



European Research Council  
Established by the European Commission

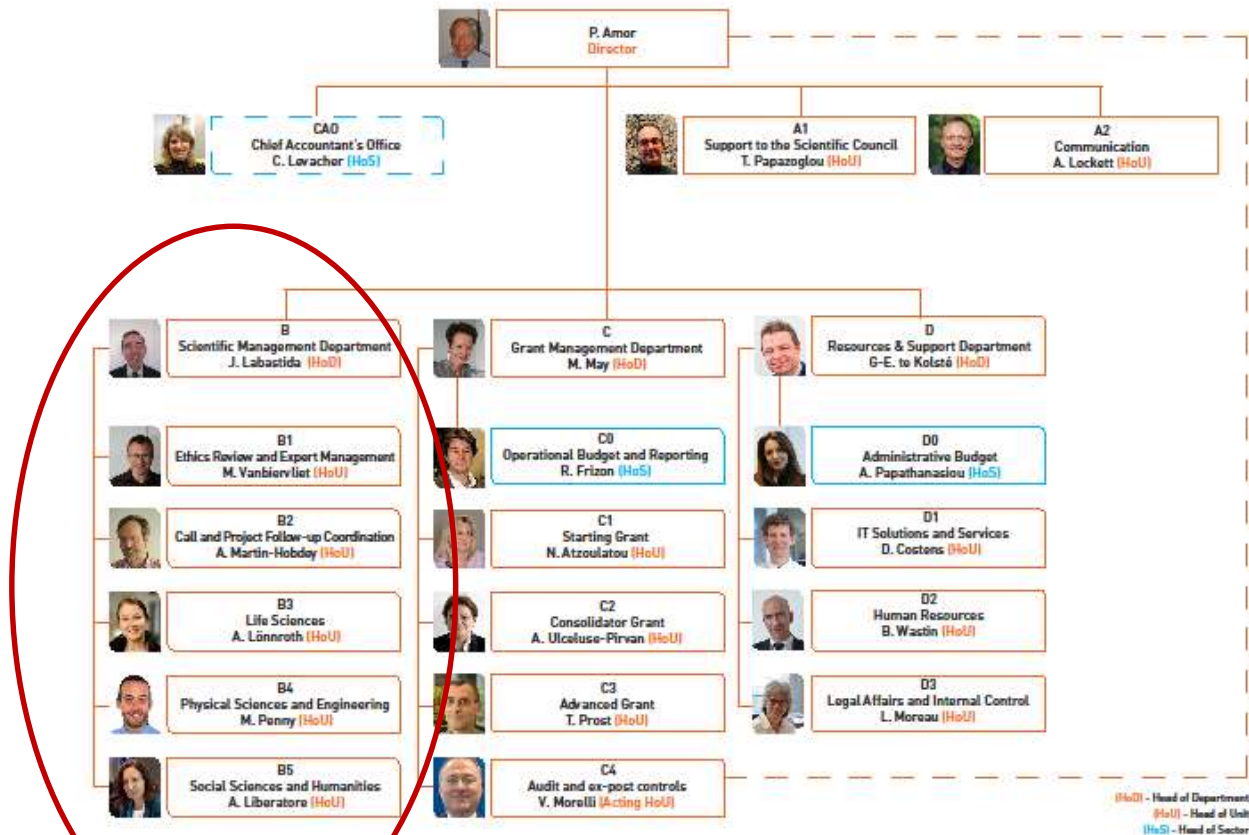
## Welcome and introduction to the work of the Scientific Department

**Jose Labastida, Head of the Scientific Department**

# The Scientific Management Department in the ERC Executive Agency



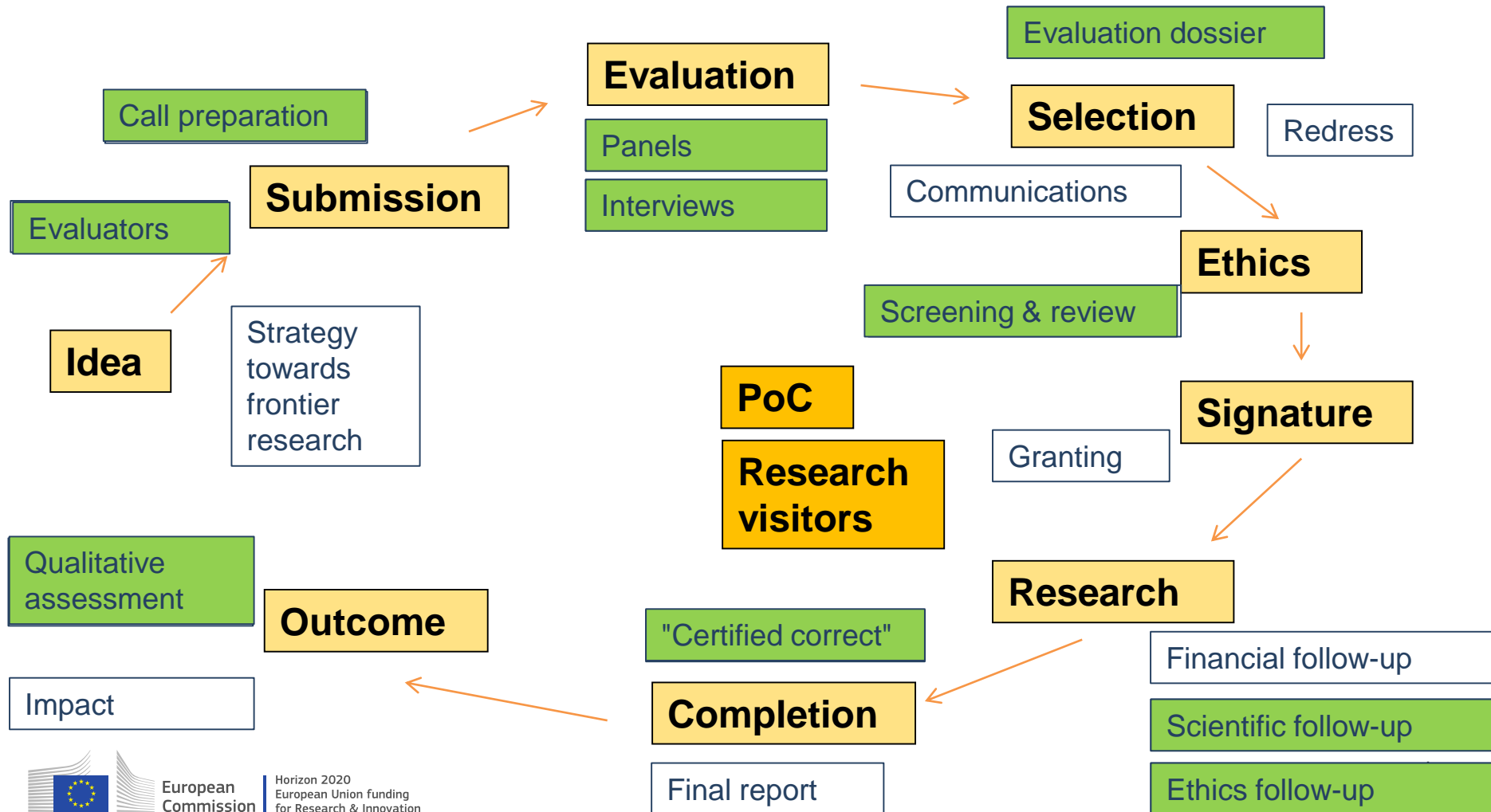
European Research Council  
Established by the European Commission



# Funding frontier research



European Research Council  
Established by the European Commission



# Functions of the Scientific Management Department



European Research Council

Established by the European Commission

- Evaluation of the proposals of ERC calls
  - Scientific evaluation
  - Ethics clearance of proposals proposed for funding
- Project follow-up
  - Scientific project follow-up
  - Ethics follow-up
- Qualitative assessment of the research funded
- Expert management recruitment and support
- Redress
- Implementation of research-visitors programmes
- Data analysis



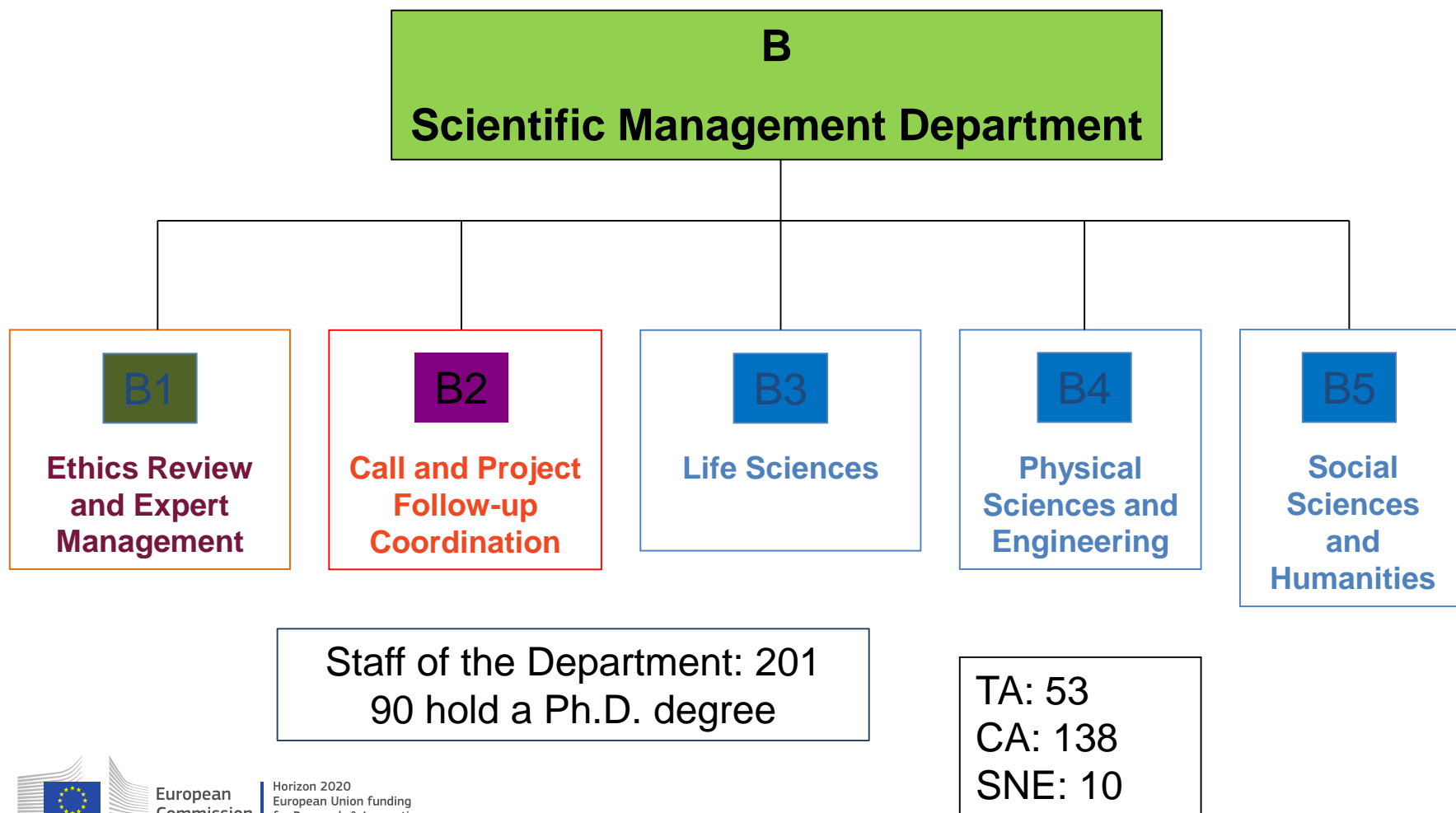
European  
Commission

Horizon 2020  
European Union funding  
for Research & Innovation

# Structure of the Scientific Management Department



European Research Council  
Established by the European Commission



# Panel teams in B3, B4 and B5



European Research Council  
Established by the European Commission

**B3**

## Life Sciences

- LS1 Molecular & structural biology & biochemistry
- LS2 Genetics, genomics, bioinformatics & systems biology
- LS3 Cellular and developmental biology
- LS4 Physiology, pathophysiology & endocrinology
- LS5 Neurosciences & neural disorders
- LS6 Immunity & infection
- LS7 Diagnostic tools, therapies & public health
- LS8 Evolutionary, population & environmental biology
- LS9 Applied life sciences & biotechnology

**B4**

## Physical Sciences & Engineering

- PE1 Mathematics
- PE2 Fundamental constituents of matter
- PE3 Condensed matter physics
- PE4 Physical & analytical chemical sciences
- PE5 Materials & synthesis
- PE6 Computer science & informatics
- PE7 Systems & communication engineering
- PE8 Products & process engineering
- PE9 Universe sciences
- PE10 Earth system science

**B5**

## Social Sciences & Humanities

- SH1 Individuals, markets & organizations
- SH2 institutions, values, environment and space
- SH3 The social world, diversity, population
- SH4 The human mind and its complexity
- SH5 Cultures & cultural production
- SH6 The study of the human past

# Matrix-like organization

		Call 1	Call 2	...	Project FU
		Team 1 of B2 staff	Team 2 of B2 staff	...	Team PFI of B2 staff
<b>Panel 1</b>	Team 1 of B345 staff	Evaluation	Evaluation	...	Scientific Monitoring
<b>Panel 2</b>	Team 2 of B345 staff	Evaluation	Evaluation	...	Scientific Monitoring
<b>Panel 3</b>	Team 3 of B345 staff	Evaluation	Evaluation	...	Scientific Monitoring
...	...	...	...	...	

**Call and Project  
Follow Up  
Coordination**

**B2**

Data analysis  
Research visitors

**B1**

**B3**

**Life Sciences**

**B4**

**Physical Sciences & Engineering**

**B5**

**Social Sciences & Humanities**

**Ethics Review and  
Expert Management**

Expert management  
Ethics review  
Redress



# ERCEA: SNE Call 2018



European Research Council  
Established by the European Commission

## SNEs in ERCEA

Bruno Wastin, Head of Unit, Human Resources

# Publication of an SNE Call for Expression of Interest for the Scientific Department

## Why?

- Exchange of **expertise** with Member States' high level scientists is **essential**
- SNE Calls enable the ERCEA to attract highly qualified applications for specialised profiles
  - For Member States to develop **knowledge and exposure** to the international scientific community
  - For SNEs to bring back the **knowledge and networks** developed during their secondment
  - For our Agency to reinforce the scientific community with **talented and experienced experts**
- ERCEA currently has 7 SNEs and 5 new SNE positions in 2019 (can start last quarter of 2018).

# Publication of an SNE Call for Expression of Interest for the Scientific Department

## What?

A Reserve List for the following specific scientific profiles:

- 1) Neuroscience
- 2) Ecology and/or evolutionary biology
- 3) Human geography and/or environmental social sciences
- 4) Demography and/or linguistics
- 5) Condensed matter physics
- 6) Computer Science and Informatics
- 7) Management and analysis of scientific evaluation and peer review processes

Deadline: 9 July, 2018

# Key Role of the Permanent Representations and Missions

- **Disseminate** the Call to reach and attract the best candidates
- **Collect** and forward all applications to us
- Help us **verify** eligibility requirements – employment status
- **Formalise** the secondment

# Eligibility



European Research Council

Established by the European Commission

***An SNE must be a national of an EU Member State or of a European Free Trade Association (EFTA) Member State or a country with which the Council has decided to open accession negotiations and which has concluded a specific agreement with the European Commission on staff secondments (Turkey).***

## ***Eligible employers***

***The employer is a national, regional or local public administration or a public intergovernmental organisation (IGO).***

***The employer is part of the public sector or is an independent university or research organization that does not seek to make profit for redistribution.***

# Secondment rules (1/2)



European Research Council  
Established by the European Commission

- *SNEs must have worked for their employer on a **permanent or contract basis** for at least 12 months before their secondment and shall remain employed there throughout the period of secondment.*
- *The SNE's employer shall continue to pay the salary and must maintain the **employment status** of the SNE throughout the period of secondment.*
- *The SNE's employer continues to be responsible for all their **social rights** particularly with regard to social security and pension.*

# Secondment rules (2/2)



European Research Council  
Established by the European Commission

*An SNE shall carry out their duties solely in the interests of the Agency. The ERCEA departments concerned, the SNE's employer and the SNE must ensure that there is **no conflict of interest** in relation to the SNE's duties while seconded to the Agency.*

The **initial period** of secondment may not be less than 6 months or more than 2 years

The secondment **may be renewed** up to a total period not exceeding 4 years

By way of **exception**, the Director of the Agency can extend the duration for another 2 years, thus arriving to a **maximum of 6 years**

# Conditions of Secondment (1/4)



European Research Council

Established by the European Commission

SNEs benefit to a large extent from the same working conditions as staff, such as:

## **A flexible work environment**

- Like regular staff, SNEs benefit from flexible working hours which means that they can vary the times when they start and finish their work within a defined bandwidth; working time is 40 hours/week.
- SNEs can also apply for occasional or regular telework

## **Leave rights and training opportunities**

- 24 days of basic leave rights per year



# Conditions of Secondment (2/4)



European Research Council  
Established by the European Commission

## Allowances

An SNE is entitled to a **daily subsistence allowance** (currently: 138,15€ per day) and a **monthly subsistence allowance** (depending on distance between place of origin and place of secondment). This does however not apply to SNEs coming from Belgium or persons having worked in Belgium more than 5 years before their secondment.

Example: SNE whose place of origin is at 501km distance from Brussels

**Daily allowances:**  $138,15 * 30 = 4,144,50\text{€}$  per month

**Monthly allowance** for distance > 500 km: 256,55€

Total: 4.401,05€

Daily Allowance 100%	138,15
Monthly Allowance	
0-150km	0
>150km	88,80
>300km	157,86
>500km	256,55
>800km	414,42
>1300km	651,23
>2000km	779,52

# Conditions of Secondment (3/4)



European Research Council

Established by the European Commission

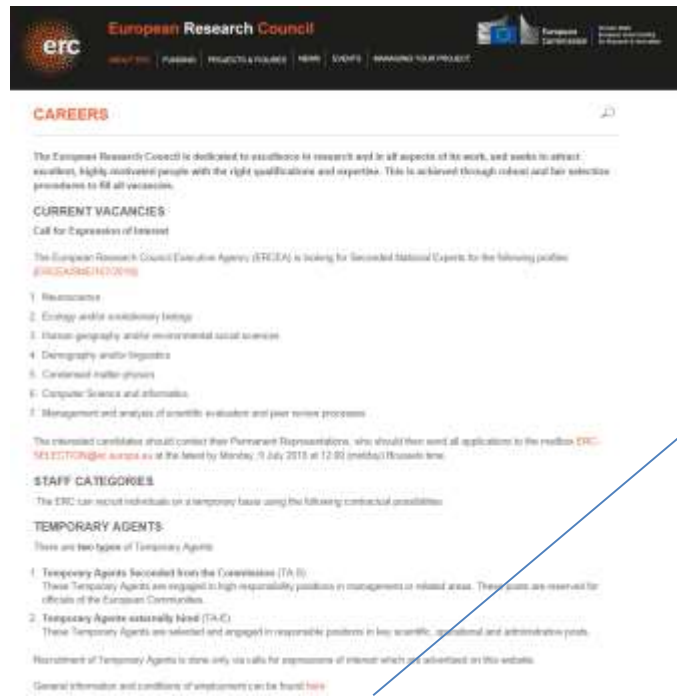
- SNEs are paid the **travel expenses** at the beginning and end of secondment (flat rate).
- SNEs have the possibility to send their children to the **European School**, subject to available places.
- SNE's can take part in **missions or external meetings** however only as part of a delegation led by a temporary staff member of the Agency or, if on his own, as an observer or for information purposes.
- SNEs are covered by the Van Breda group **insurance policy against accident or death**.

# Conditions of Secondment (4/4)



European Research Council  
Established by the European Commission

For more details on rules applicable to SNEs, please consult:  
<https://erc.europa.eu/about-erc/careers>



## Seconded National Experts

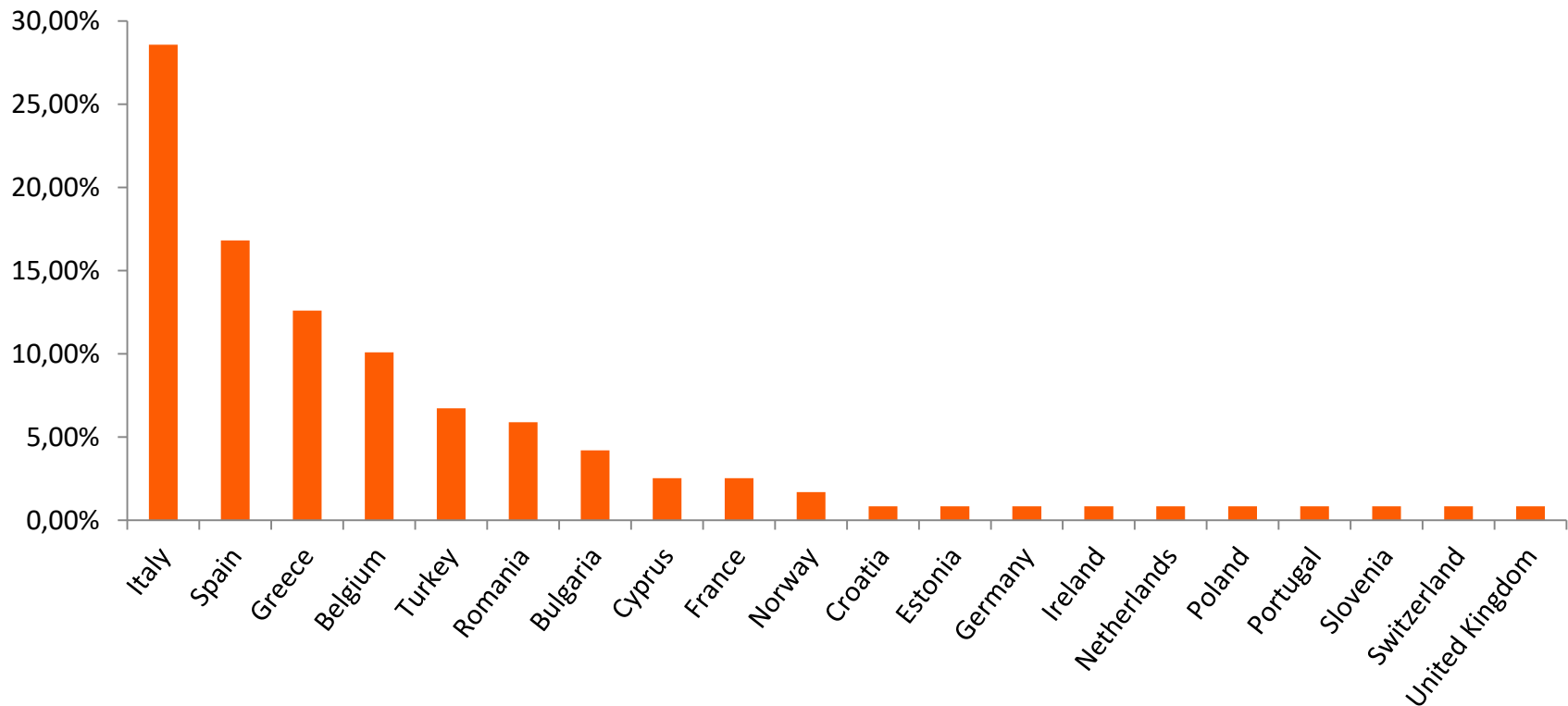
Seconded National Experts (SNEs) are national or international civil servants who are working temporarily for the ERCEA under the rules applicable to such experts. They will assist, through their expertise, in the execution of high level tasks. If you are interested in working as a SNE, our vacancies are published on this website

# Applications received by Country



European Research Council  
Established by the European Commission

% Applications (2013 - 2018)



Horizon 2020  
European Union funding  
for Research & Innovation

# Current SNEs Nationalities at ERCEA



European Research Council

Established by the European Commission



European  
Commission

Horizon 2020  
European Union funding  
for Research & Innovation

# Contact



European Research Council  
Established by the European Commission

For any questions you may have in the future,  
please contact:

ERCEA Selection Team

[ERC-SELECTION@ec.europa.eu](mailto:ERC-SELECTION@ec.europa.eu)

# ERCEA: SNE Call 2018



European Research Council  
Established by the European Commission

## Information on the SNE profiles

**Martin Penny, Head of Unit, Physical Sciences and Engineering**

# Why SNE Staff?

## Seconded National Experts

**Real added value for the ERCEA:**

**Specialist knowledge and skills**

**Practical experience and understanding of the research base and the needs of researchers**

**A fresh approach and insight to our procedures**

**'Ambassadors' for the ERC after their secondment**

**Broader range of countries and seconding organisations**



# What are we looking for?

## Candidates for seven different SNE profiles

**Strong research background and experience**

**Management of research projects an asset**

**Experience, knowledge and understanding of peer review processes an asset**

**Excellent communication and drafting skills**

# What do SNE staff in ERCEA do?

## Fully involved in all aspects of:

Coordination of the evaluation and selection of research proposals

Assess the scientific implementation of projects

Analyse data on the evaluation process, results and impacts of the programme - recommendations for improvements

Present the programme to external stakeholders

# Call and Project Follow-up Coordination Unit

**Head of Unit: Alejandro Martin Hobdey**

**One profile:**

- **Management and analysis of scientific evaluation and peer review processes**

## Head of Unit: Anna Lonnroth

### Two profiles:

- Neuroscience
- Ecology and/or evolutionary biology

**Head of Unit: Angela Liberatore**

**Two profiles:**

- **Human geography and/or environmental social sciences**
- **Demography and/or linguistics**

# Physical Sciences and Engineering Unit



European Research Council  
Established by the European Commission

**Head of Unit: Martin Penny**

**Two profiles:**

- **Condensed matter physics**
- **Computer Science and informatics**